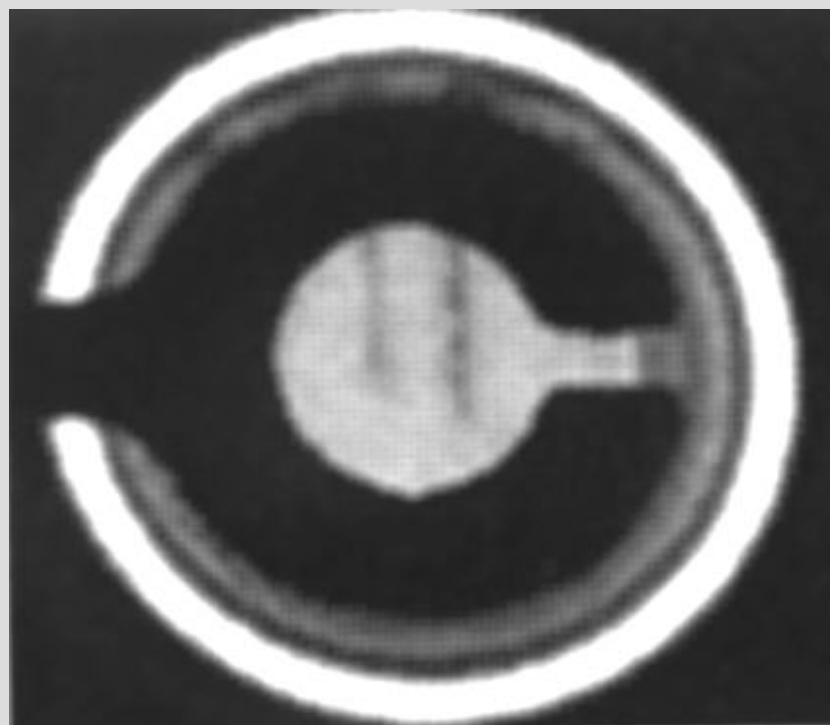
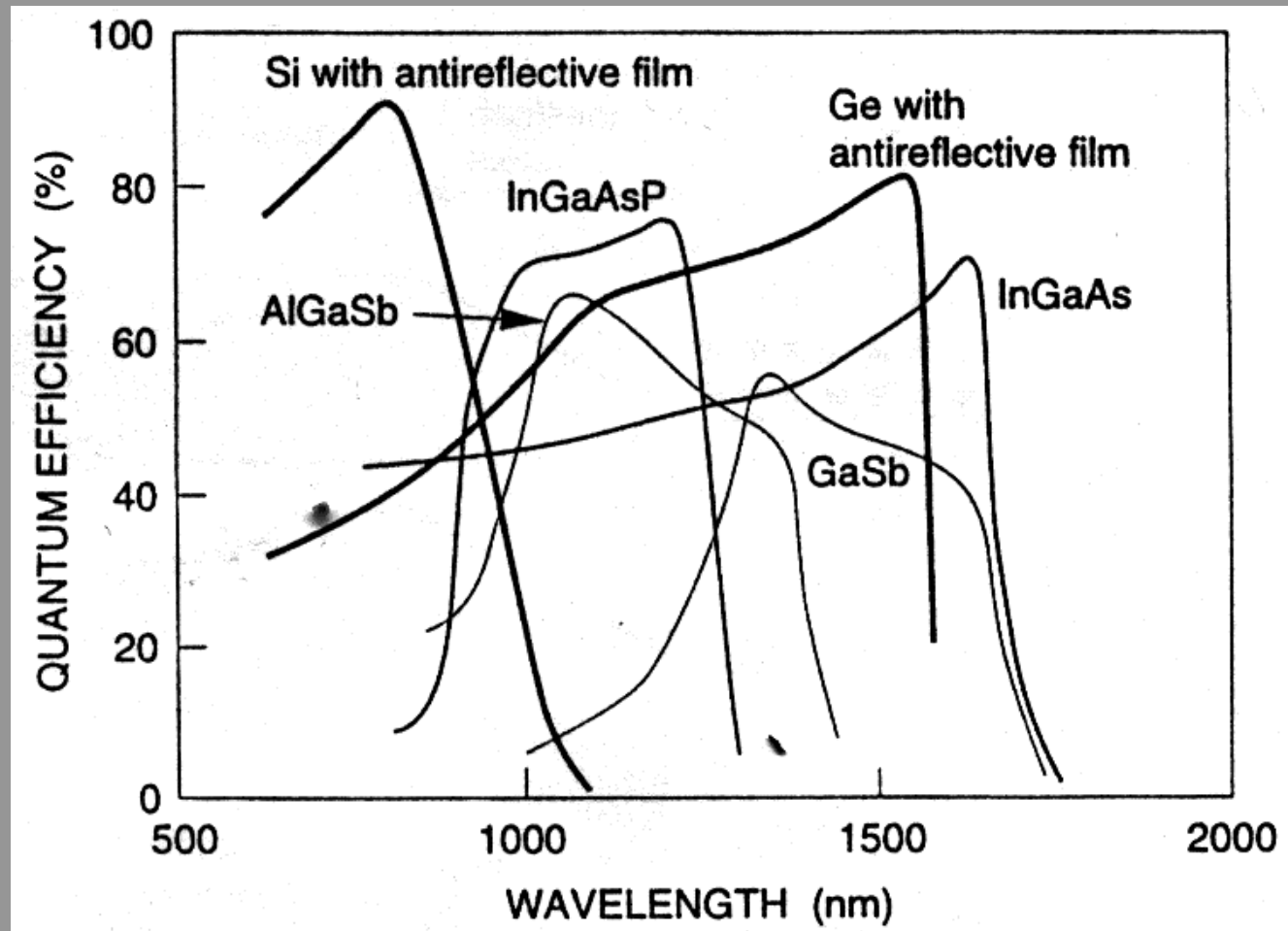


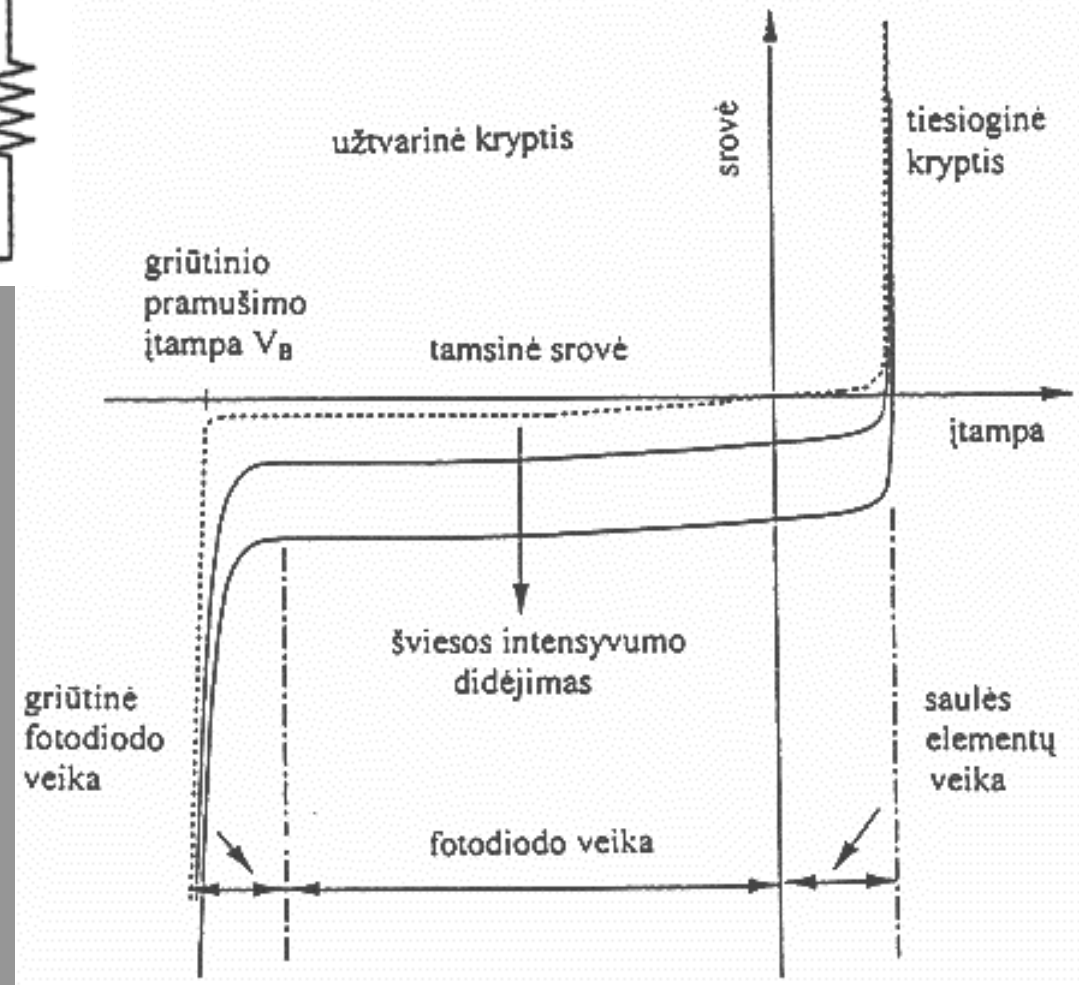
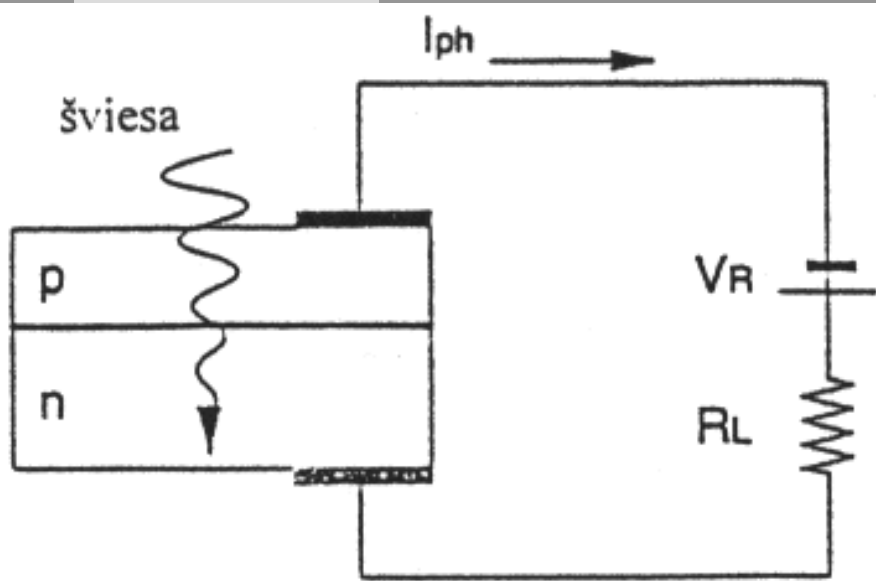
Fotodiodai



05/11/03

Naudojamos medžiagos





Tamsinė srovė

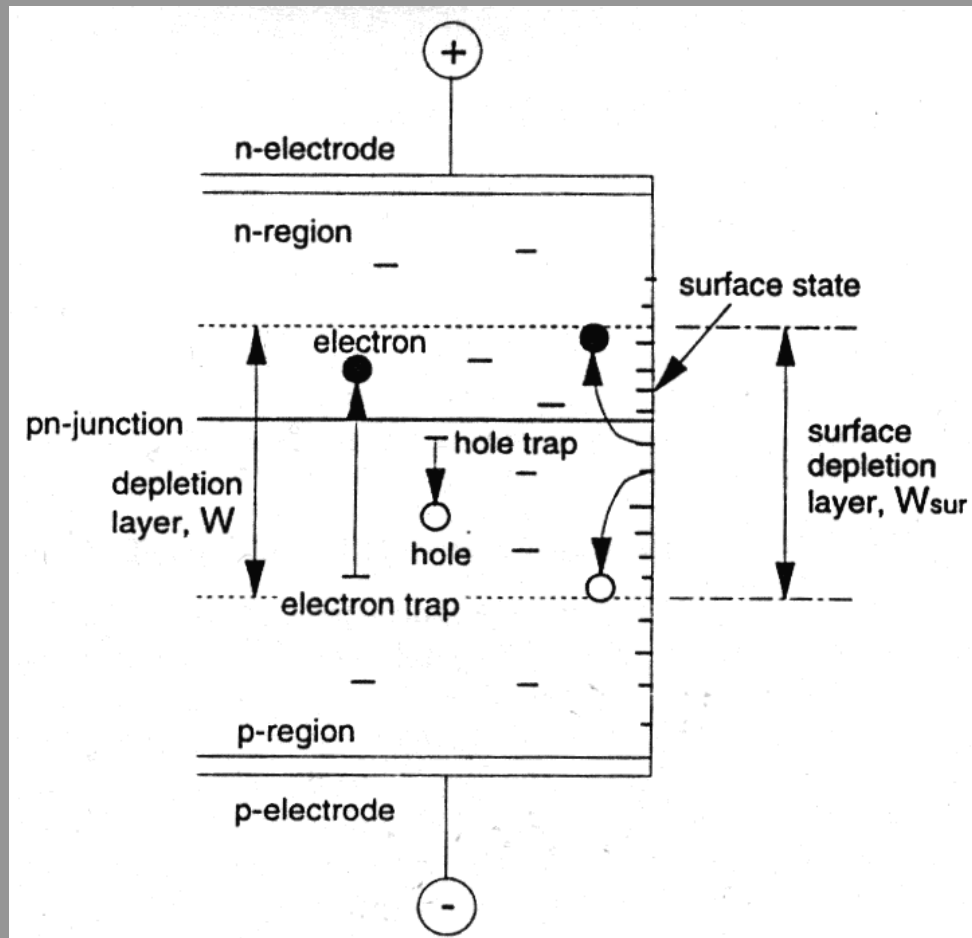
$$I_d = I_{dd} + I_{ds} + I_{dg-r} + I_{dt}$$

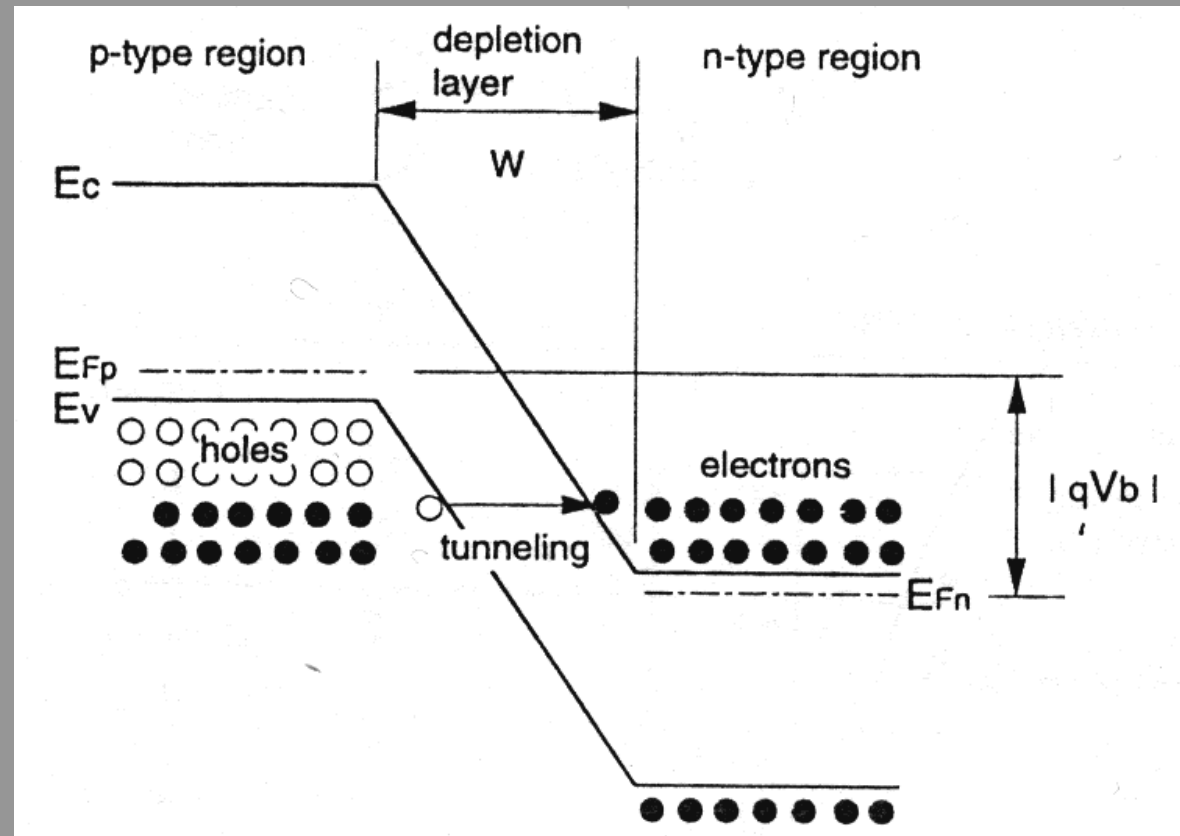
difuzinė (I_{dd})

paviršinio nuotėkio (I_{ds})

generacinė-rekombinacinė (I_{dg-r})

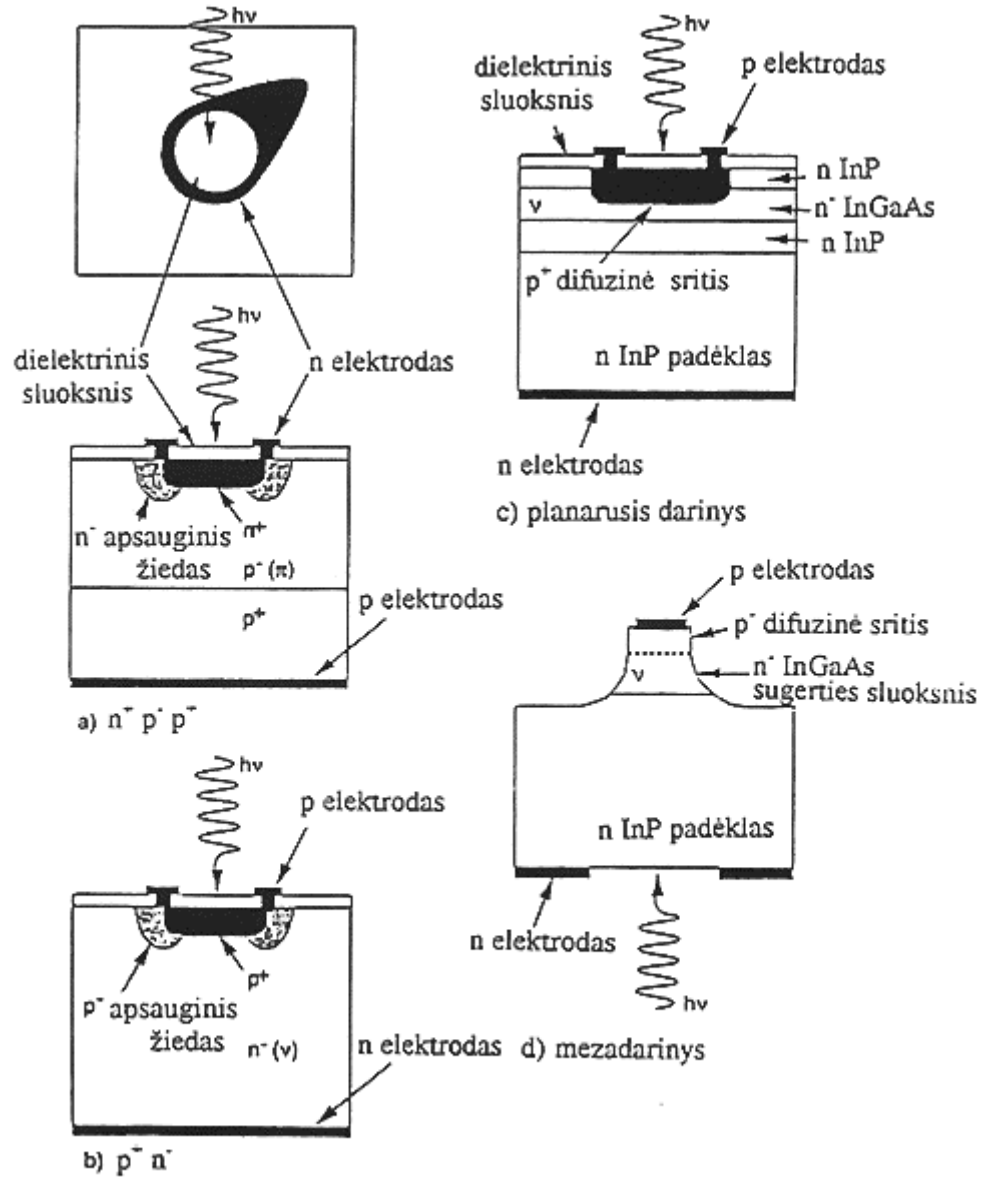
tunelinė (I_{dt})





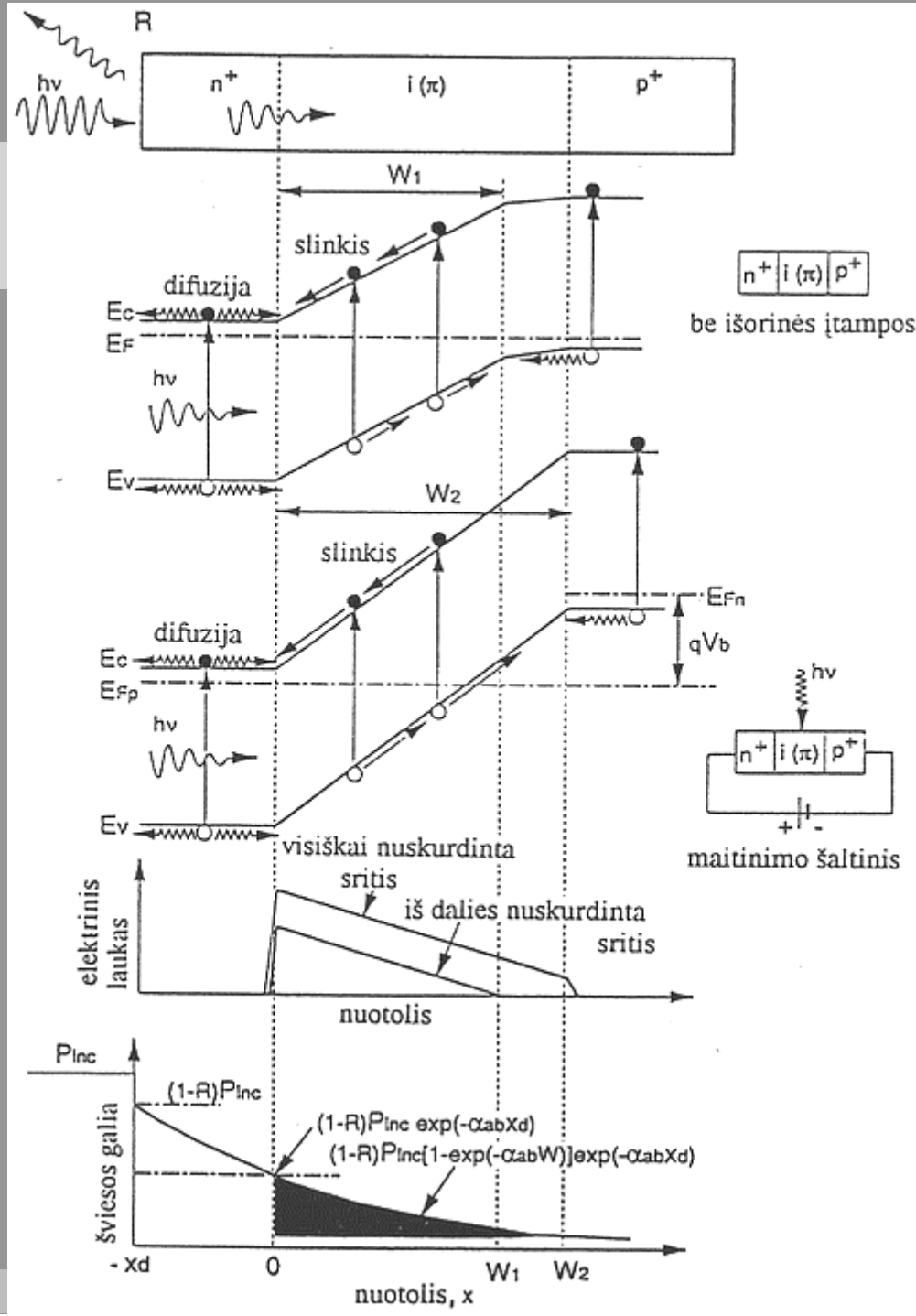
p-i-n

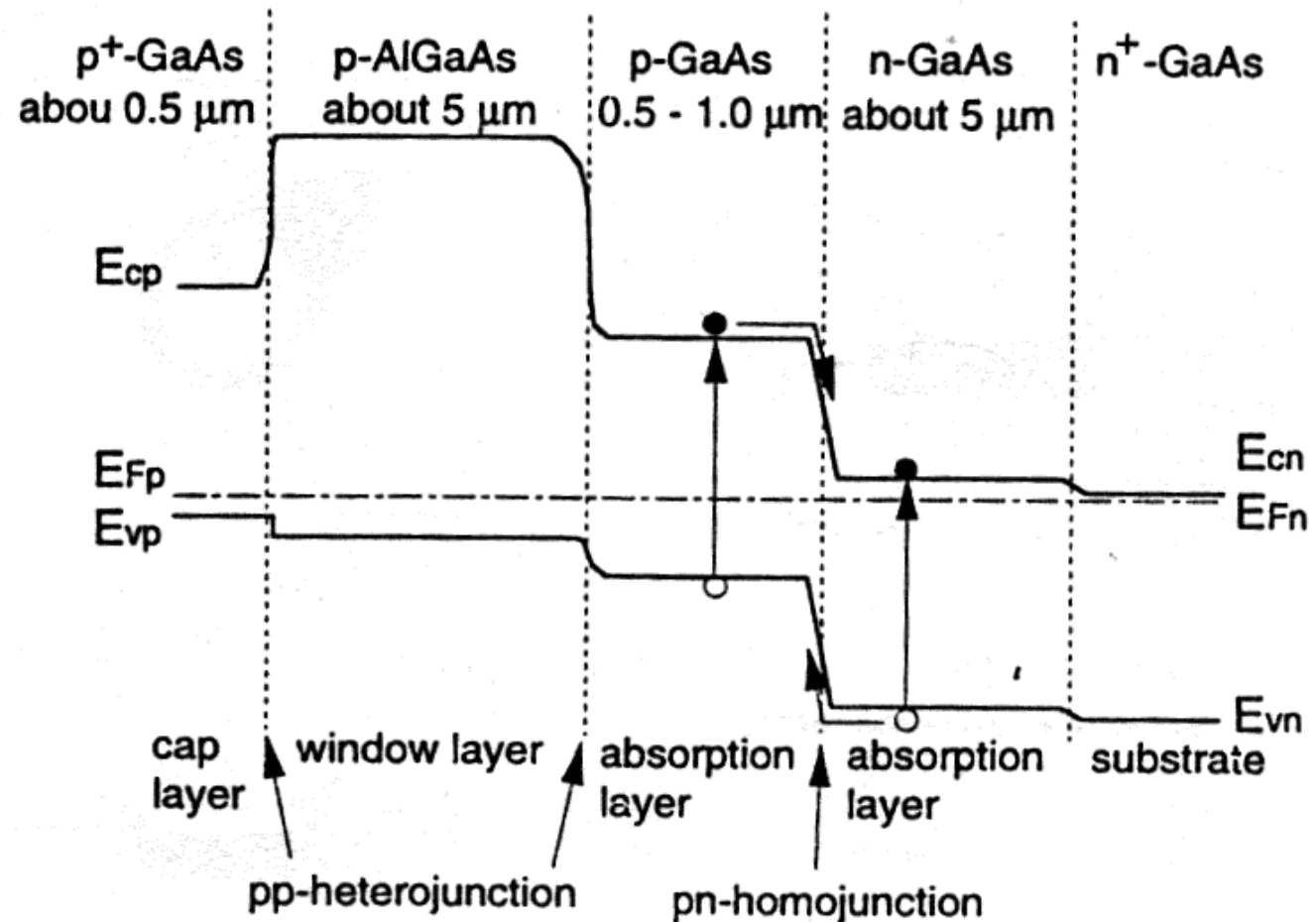
Varzdaas is virsaus



Ge (arba Si) pn lygiatarpē sandūra

$A^{\text{III}}B^{\text{V}}$ sudētinis puslaidinīkis
(pn lygiatarpē sandūra + vienarūšē
īviariatarpē sandūra)





GFD

